



Mobile Crane Operator Certification

Telescoping Boom Cranes Under 21 Tons

Load Chart Handout

for

Broderon IC-80-2D

Terex Stinger 3470



AT A GLANCE:

- Rated Capacity — 17,000 pounds
- Vertical Reach — 28' 0"
- Horizontal Reach — 24' 0"
- Continuous Rotation
- 10' 2" Turning Radius with
Optional Four Wheel Steer
- Carry Deck
- Hydraulic Outriggers

bmc BRODERSON
Manufacturing Corp.

P.O. Box 14770, Lenexa, KS 66285-4770
(913) 888-0606 • FAX (913) 541-0690

BRODERSON IC-80-2D

RATED LIFTING CAPACITIES IN POUNDS

LOAD RADIUS IN FEET	3-SECTION BOOM		10 FT BOOM EXTENSION INSTALLED	
	ON RUBBER	ON OUTRIGGERS	ON RUBBER	ON OUTRIGGERS
5	9,500	17,000	7,000	7,000
6	8,500	14,500	6,000	6,000
8	6,000	10,250	5,000	5,000
10	4,150	7,700	4,000	4,000
12	3,025	6,550	3,275	3,450
14	2,350	5,550	2,600	3,050
16	1,850	4,450	2,125	2,700
18	1,550	3,950	1,800	2,250
20	1,300	3,250	1,525	2,250
22	1,100	2,875	1,275	2,250
24	925	2,475	1,050	2,250
26			850	2,250
28			700	2,000
30			600	1,775
32			525	1,625
34			450	1,400

NOTES

Capacities on outriggers are 85% of tipping loads.
Capacities on rubber are 75% of tipping loads.

Capacities below bold line are limited by tipping.
Other capacities are limited by structural or hydraulic capability.

Deck capacity 12,000 lb (centered over axle).

Personnel bucket capacity, outriggers extended, 300 lb per bucket, 600 lb total. The booms on this unit are all steel and have no line voltage rating.

Maximum hydraulic pressure is 3,000 psi.

Deduct 120 lb from all "on rubber" capacities when boom extension is stowed on base boom.

All capacities apply to operation on firm level surfaces.

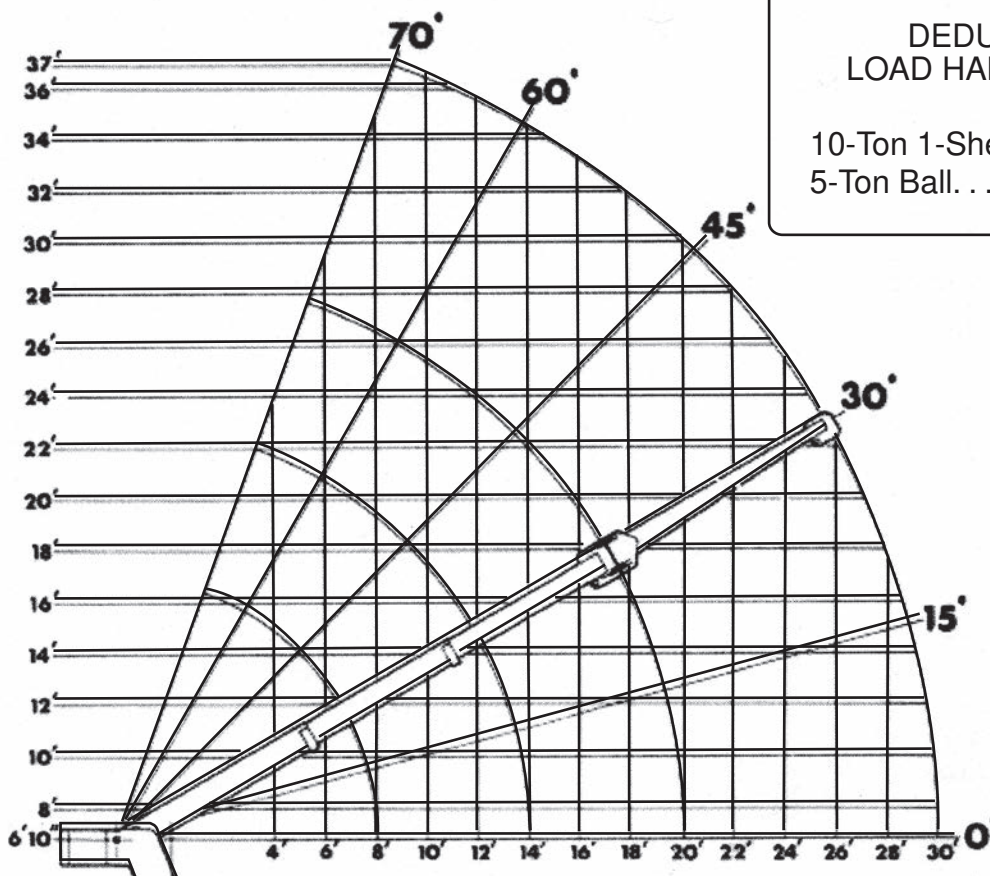
The load hoist line on this unit must be 9/16" diameter 6 x 37 IWRC EIP wire rope or equivalent with a minimum breaking strength of 31,500 lb.

Use single part load line for loads to 9,000 pounds.
Use two part load line for loads to 17,000 pounds.

Operation:

1. Read and understand owners manual before operating the crane.
2. Check level of hydraulic oil daily.
3. Check unit for visible effects and loose parts.
4. Start engine.
5. Set vehicle park brake securely.
6. Extend outriggers to solid footing.
7. Operate all hydraulic controls slowly and deliberately for smooth motion.

Carry capacity speed limit 3 mph.



DEDUCTIONS FOR LOAD HANDLING DEVICES

10-Ton 1-Sheave Block . . . 200 lbs
5-Ton Ball. 150 lbs



STINGER 3470 | Boom Truck Crane

BOOM TRUCK CRANE STINGER 3470



FEATURES

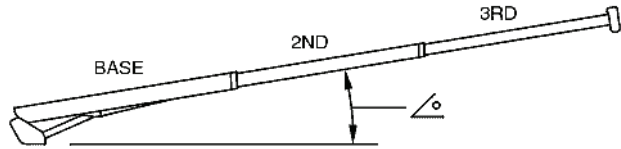
- 34,000 lb (15 422 kg) maximum lifting capacity
- 80' (24.38 m) maximum sheave height
- 120' (36.57 m) maximum sheave height with 24-40' (7.31-12.19 m) jib
- 27-70' (82.30-21.34 m) three-section full power fully synchronized boom
- Exclusive color coded boom and load charts
- Easy-to-install optional 24' (7.31 m) one stage or 24-40' (7.31-12.19 m) two stage telescoping jib, man baskets or work platform increase job capacities
- Electronic Load Moment Indicator and anti-two-block device standard
- Externally located planetary rotation drive for easy accessibility for maintenance
- 2-speed planetary winch has 10,500 lb (4 703 kg) maximum permissible 1 part line, 37,000 lb (16 782 kg) breaking strength, 186 ft/min (57 m/min) maximum line speed
- Dual control station with direct mechanically controlled hydraulic system
- 70 gal (266 L) capacity hydraulic tank



**Terex
Cranes**

STINGER 3470 Boom Truck Crane

LOAD RATINGS IN POUNDS FOR 360° FULL CAPACITY WORK AREA
WITH OUTRIGGERS EXTENDED AND OPTIONAL FRONT STABILIZER

OPERATING HEIGHT	LOADED BOOM ANGLE	BOOM LENGTH											
			°	27 FT	°	34 FT	°	43 FT	°	52 FT	°	61 FT	°
5	77	34000											
10	66	21100	71	17100	75	16000	78	15700					
15	54	15100	62	14000	68	12100	72	11100	75	10800	77	9600	
20	39	11100	51	10100	61	9100	66	8600	71	8200	73	7300	
25	17	7900	40	7700	53	7105	61	6900	66	6600	69	5900	
30			23	6500	44	6100	54	5600	60	5300	64	4900	
35					33	4800	47	4700	54	4600	60	4150	
40					15	3500	38	4100	48	3900	55	3550	
45							27	3250	41	3200	49	3050	
50							9	2950	33	2800	44	2650	
55									23	2500	37	2350	
60											29	1900	
65											19	1700	
STOWED JIB DEDUCTIONS			450	360	260	230	200	175					

NOTE: RATINGS ABOVE THE HEAVY LINE
ARE BASED ON STRUCTURAL COMPETENCE
AND NOT ON MACHINE STABILITY.

JIB CAPACITIES FOR ALL BOOM LENGTHS

VERIFY OPERATIONAL MODE SETTING ON MG585 DISPLAY BEFORE LIFTING WITH JIB

LOADED BOOM ANGLE	35°	40°	45°	50°	55°	60°	65°	70°	75°	80°
RETRACTED 24 FT JIB	700	825	1000	1150	1340	1600	1900	2300	3100	4160
EXTENDED 40 FT JIB	520	580	650	730	810	930	1080	1400	1810	2260

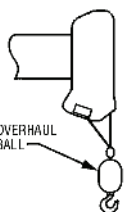
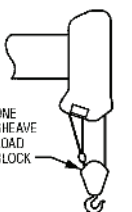
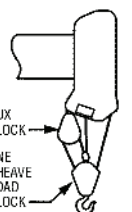
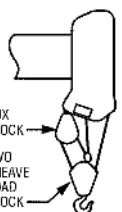
DEDUCTIONS FROM RATED LOADS FOR LOAD HANDLING DEVICES

AUXILIARY SHEAVE
50 POUNDS

OVERHAUL BALL
125 POUNDS

1 SHEAVE LOAD BLOCK
200 POUNDS

2 SHEAVE LOAD BLOCK
230 POUNDS

1 PART LINE	2 PART LINE	3 PART LINE	4 PART LINE
			
LOADS UP TO	LOADS UP TO	LOADS UP TO	LOADS UP TO
9,600 LBS STD CABLE	19,200 LBS STD CABLE	28,800 LBS STD CABLE	34,000 LBS STD CABLE
6,720 LBS ROT RESISTANT CABLE	13,440 LBS ROT RESISTANT CABLE	20,160 LBS ROT RESISTANT CABLE	26,880 LBS ROT RESISTANT CABLE

CAUTION

ANTI-TWO-BLOCK SYSTEM
MUST BE IN GOOD
OPERATING CONDITION
BEFORE OPERATING CRANE.
REFER TO OWNER'S MANUAL.

KEEP AT LEAST 3 WRAPS
OF LOADLINE ON DRUM
AT ALL TIMES.

USE ONLY 9/16 INCH DIAMETER
CABLE WITH 33,600 LB
BREAKING STRENGTH
ON THIS MACHINE.