



Mobile Crane Operator Certification

Articulating Boom Cranes

Load Chart Handout

for

IMT 16000

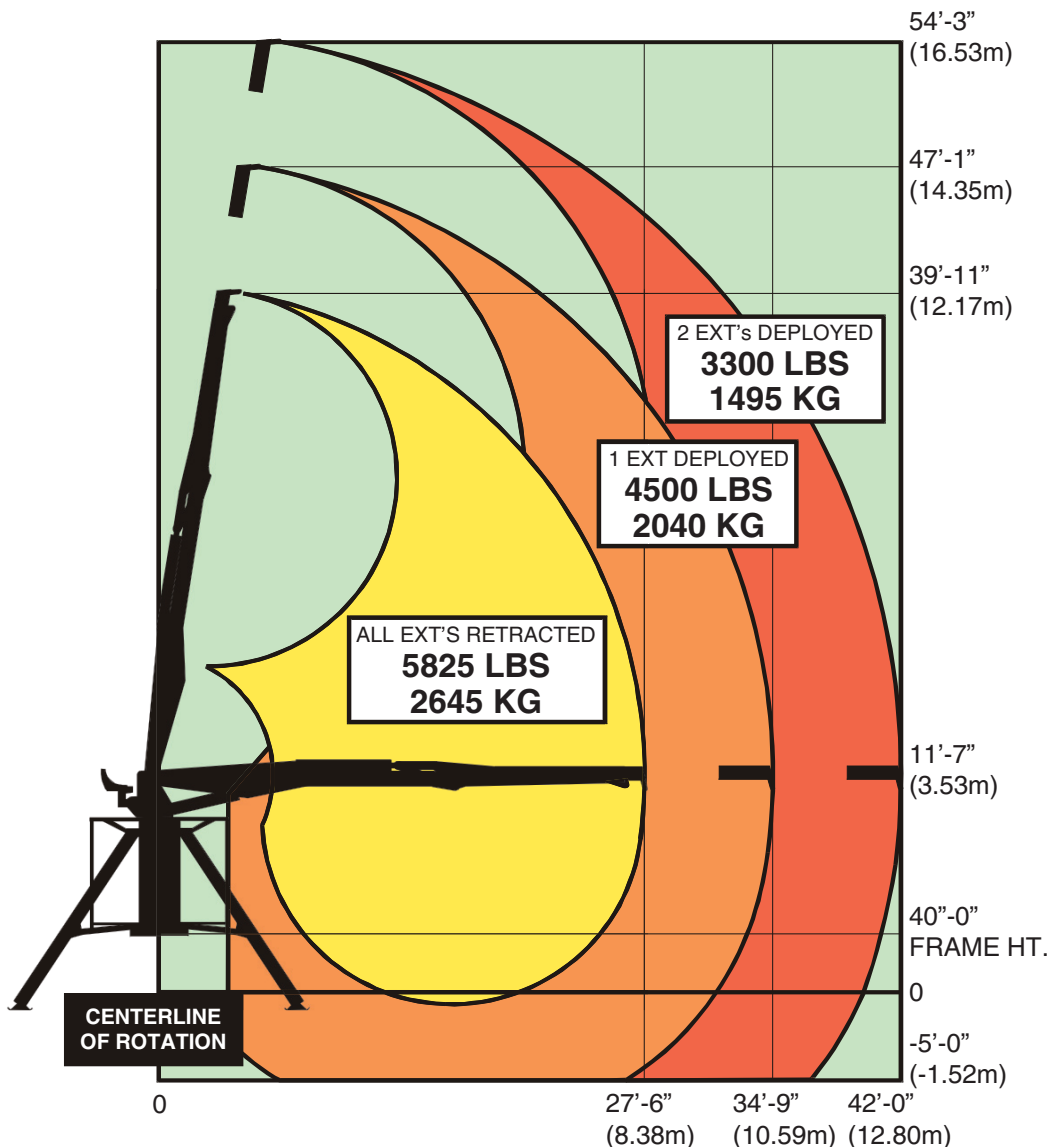
National N205



16000 SERIES II CRANE

42' BOOM (2H)

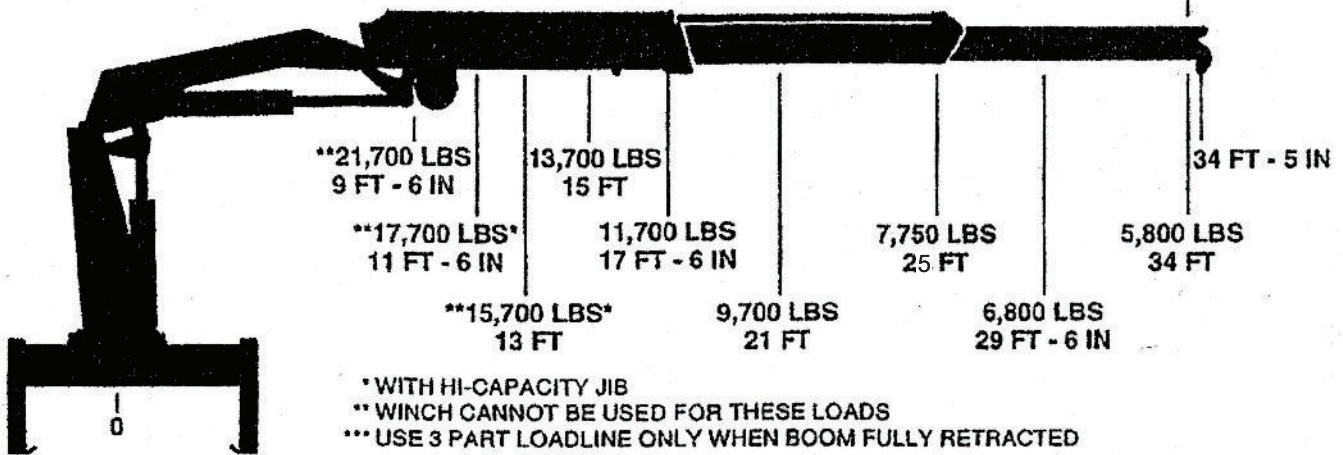
- Capacities through geometric range are limited to those shown in horizontal position.
- Loads shown are based on crane structural or hydraulic capability.
- Working loads will be limited to those shown. Deduct the weight of load handling devices.
- Horizontal Reach - 42 feet
- Lifting Height - 54 feet 3 inches
- Total Swing/rotation 450°



NATIONAL CRANE CORPORATION SERIES N205/34

876761

HYDRAULIC POWERED ⇔



1 PART	2 PART	***3 PART	NOTICE	LOADLINE EQUIPMENT DEDUCT
 MAX. PULL 5,000 LBS	 MAX. PULL 10,000 LBS	 MAX. PULL 15,000 LBS		USE ONLY 1/2" DIAMETER ROTATION RESISTANT CABLE WITH 29,200 LBS BREAKING STRENGTH ON THIS MACHINE

NOTES - MODEL 205/34

- Hydraulic extension to 34 ft. 4-in. (10.5 m).
- 210,000 ft·lb. (29.03 t·m) crane rating.
- 11-ton (9.98-t) maximum capacity.
- 46-ft. 6-in. (14.2-m) maximum vertical reach from ground level with the crane mounted on a 42-in. (1067-mm) high truck frame.
- 25-ft. (7.6-m) reach below truck frame.